

## Technical specifications

### Characteristics

Purpose:	Measurement of gas density
Principle:	Reference gas measurement
Overpressure:	max. 13 bar
Vibrations:	4 g (20...80 Hz), min. difference 7 kPa from switch point
Ambient temp.:	-40...+80°C
Protection:	IP 67
Switching differential:	micro switch 20: <17 kPa

### Storage

Storage temp.:	-40 ... +80°C
Humidity:	max. 95% relative
only with original packing in clean and dustfree rooms	

### Mechanical data

#### Material

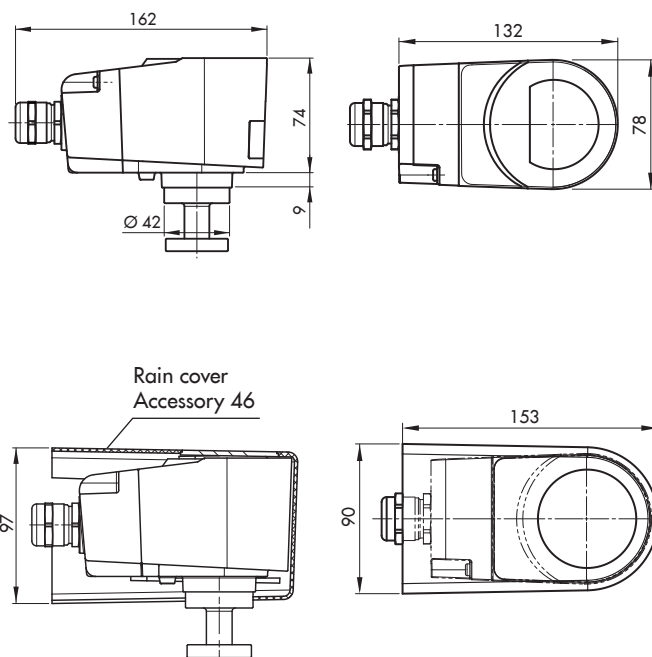
Measurement system:	
Sensor:	1.4404, 1.4571 (AISI316L, AISI316)
Filling:	Gas
Housing:	AISI10Mg
Screwed cable gland:	brass nickel plated
Weight:	~ 1.0 ... 1.2 kg

### Type label (Identification)

**Important** for all inquiries please indicate:

Instrument type:	Type: XXXX.XX.XXXX.XX
Serial number:	S/N: XXXXXX.X.XX.XX-XXX

## Dimensions



## Electrical data of switch

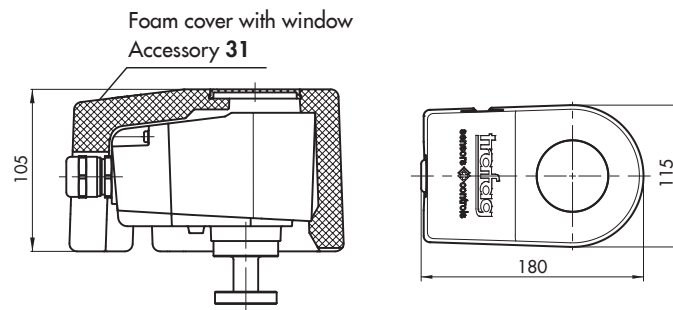
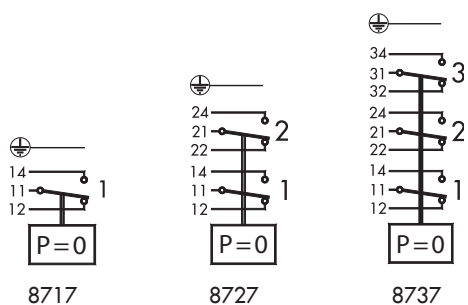
### Rating

Resistive Load (Inductive Load)  
Standard switch 20:

AC	250 V	10 (1.5) A
DC	250 V	0.1 (0.05) A
	220 V	0.25 (0.2) A
	110 V	0.5 (0.3) A
	24 V	2 (1) A

### Electrical connection

Switch points as per order

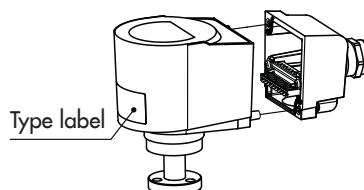


## Disassembly/Assembly

When disassembling proceed as follows:

- Turn off control voltage
- Do not release control cable, cable gland
- Remove cover by loosening screws (Fig. 1)

Fig. 1



Connected with all electrically conductive elements of the Density Monitor

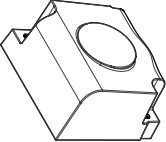



**When checking the switch points of Density Monitors, it is important to use suitable test instrumentation.**

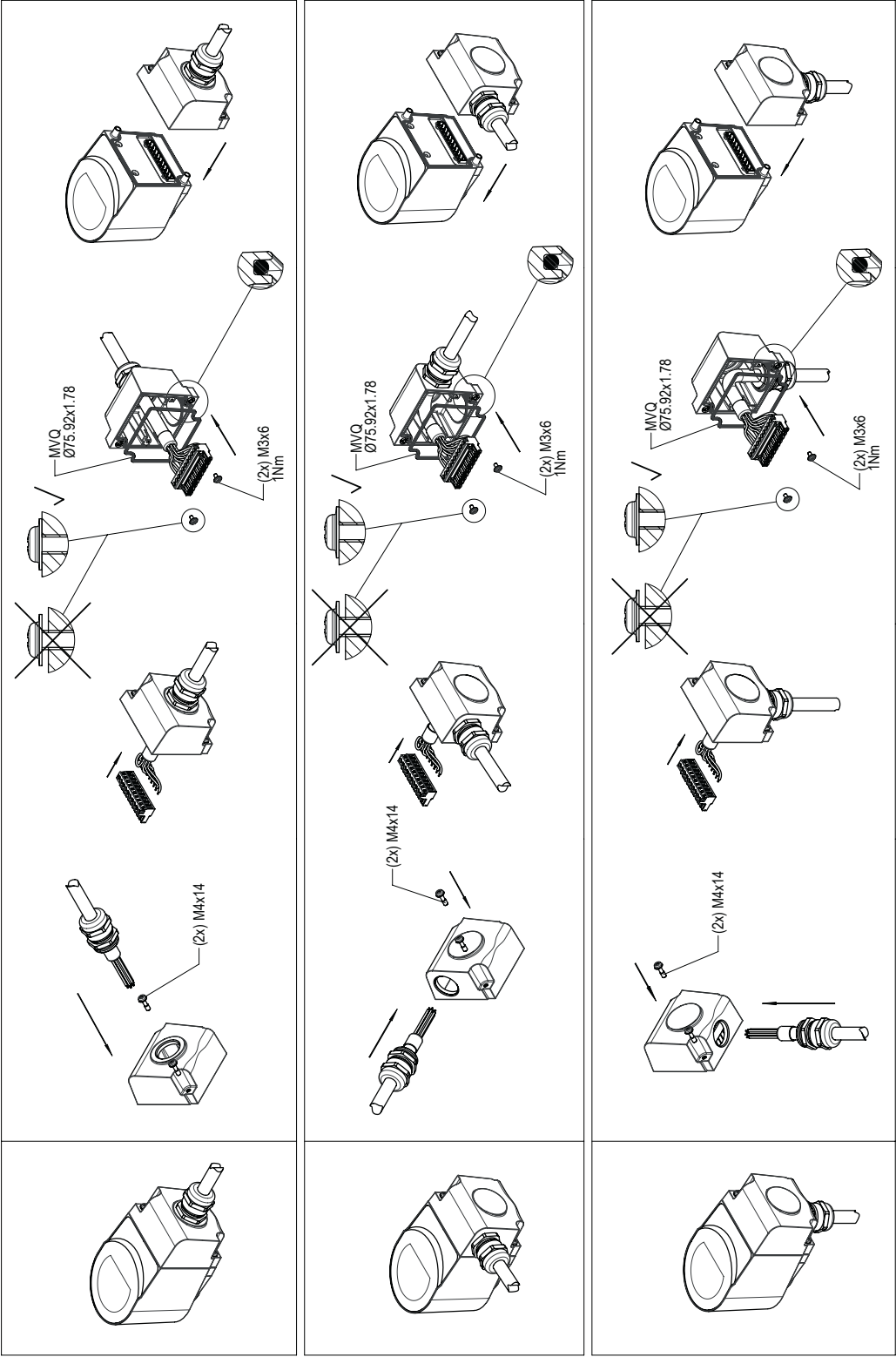
Electrical testing instruments must fulfill the following requirements:

- Minimum voltage to test micro switches 24VDC, min. 0.1A (max. values according to product instruction)
- Alternative test voltages according to electrical specification of switches stated on product data are also permissible

### Note:

Low voltage contact testers are not suitable for checking the switch points of Density Monitors and should not be used!

CONTENT	
1x	 M25x1.5
1x	 MVQ Ø75.92x1.78
2x	 M3x6
2x	 M4x14



# ATTENTION

